

BARCELONA AIR ROUTE



PRIVATE COMPANIES, PUBLIC ORGANIZATIONS, INVESTORS, CONTRACTORS AND ENTREPRENEURS PARTNER WITH US FOR ADVICE, CAPITAL, INSIGHTS AND SOLUTIONS.



Market factors favor inauguration of a new air route to meet the demand for additional, passenger and cargo service linking Spain with the rapidly expanding markets of China and Latin America, and linking European destinations, via Barcelona hubs, to trans-Atlantic and global destinations.

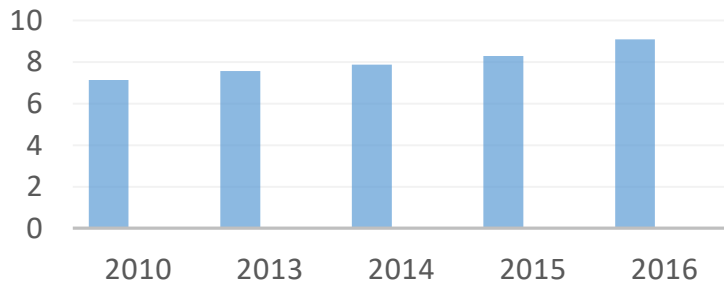


**Chinese travelers are on their way to Spain, Latin America, Europe,
We are on our way to China,
Are you ready to take your share?**

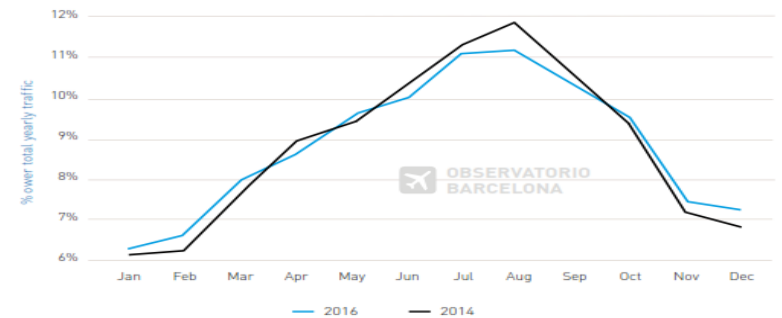
This statistic displays the number of tourists visiting the city of Barcelona from 2010 to 2015. Over 8 million tourists visited the city in 2015, an increase of over 6 million people since 1990. The number of international tourists visiting Catalonia also increased over the period, reaching around 18 million in 2016.

Barcelona is the second most populous city in Spain and capital city of Catalonia. As a tourist destination, Barcelona is one of the most popular in Spain as well as Europe. Worldwide the city ranked as the 25th most visited city based on international arrival figures in 2015 and 8th among European city destinations.

Number of tourists visiting Barcelona from 2010 to 2015 (in millions)



Slow decrease of Barcelona's seasonality BCN Seasonality 2014 - 2016



Fuente: Elaboración GPA a partir de datos de AENA
Source: GPA using AENA data

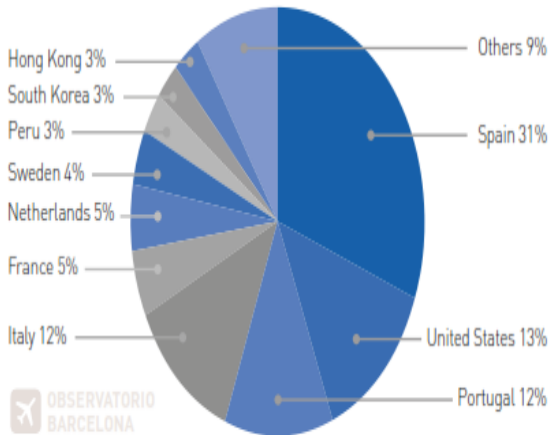
Passenger traffic at Barcelona airport from 2010 to 2015. Between these two years, the number of passengers flying to or from Barcelona airport increased by over 30 million.

In summer 2017 airlines offer over 1.3 million extra seats in Barcelona, up 4% on the previous year.

By market, the most notable increase in capacity is to the domestic market, up 31%, followed by the US with Norwegian routes. Gains in capacity to Asia can also be seen, with new flights by Korean Air to Seoul and by Cathay Pacific to Hong Kong.

THE SPANISH AND US MARKETS LEAD THE SUMMER 17 CAPACITY GROWTH

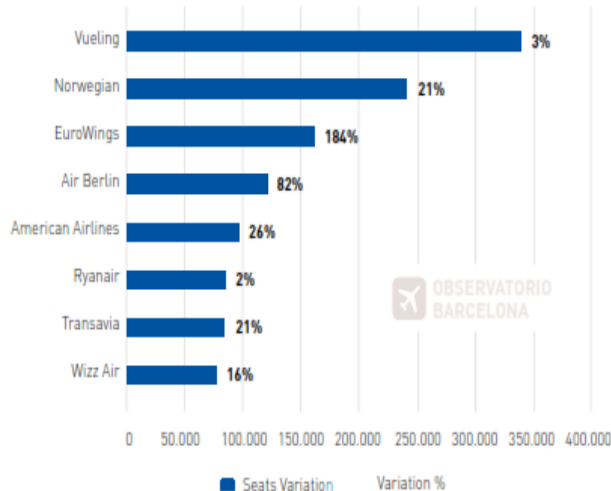
BCN Summer 17 Capacity Variation by Markets



Fuente: Elaboración GPA a partir de datos de Innovata
Source: GPA using Innovata data

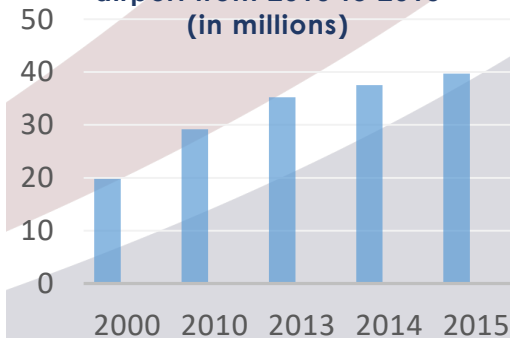
VUELING, +340K ADDITIONAL SEATS. NORWEGIAN OPENS 4 LONG HAUL ROUTES

BCN Summer 17 Capacity Variation by airlines
+1,3 Million Seats (+4%)



Fuente: Elaboración GPA a partir de datos de Innovata
Source: GPA using Innovata data

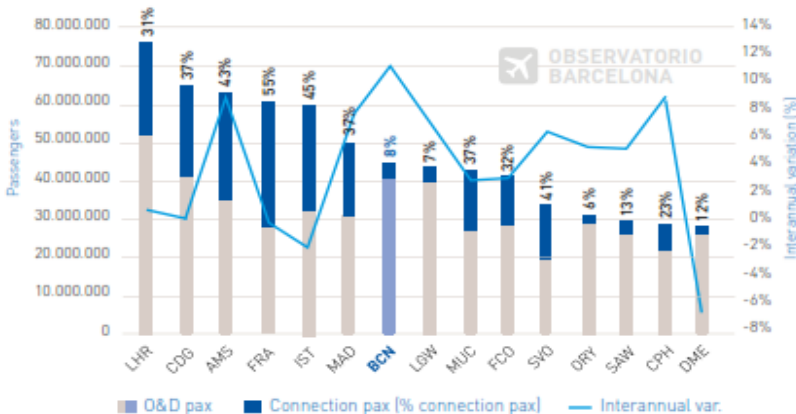
Number of passengers moving through Barcelona airport from 2010 to 2015 (in millions)



Barcelona now stands as the seventh European airport in terms of passenger numbers. The airport has overtaken direct competitors such as London Gatwick, Munich and Rome Fiumicino, making it the fastest growing airport over 40 million passengers in Europe in 2016 (+11.2%). Barcelona remains the 5th European city in origin and destination traffic, increasingly closer to the Russian capital.

BCN JUMPS TO 7TH EUROPEAN AIRPORT. FASTEST GROWING BIG AIRPORT IN EUROPE

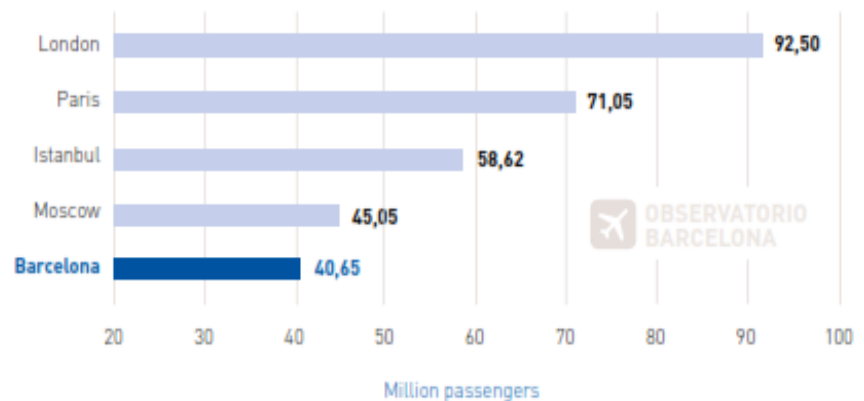
Top 15 European airports by total Traffic 2016



Fuente: Elaboración GPA a partir de datos de Anna.aero e Innovata
Source: GPA using data from Innovata and Anna.aero

BCN'S IS THE 5TH O&D EUROPEAN CITY, AND THE 3RD EUROPEAN O&D AIRPORT

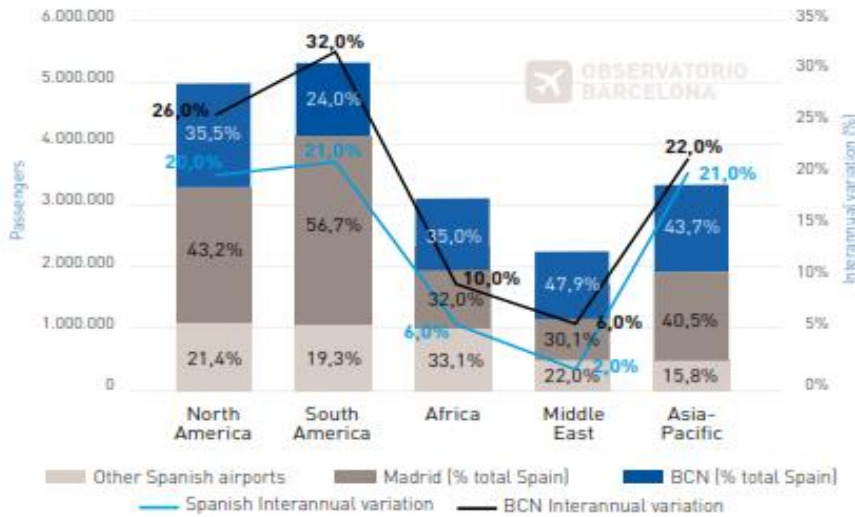
Top 5 European Cities by O&D Traffic 2016



Fuente: Elaboración GPA a partir de datos de ADI
Source: GPA using ADI data

Barcelona has grown in all intercontinental destinations above the Spanish average, gaining market share. Strong growth towards North America due to the new routes and frequencies, as well as to Latin America because of the commitment of LATAM Airlines and its new route to Lima. Growth also of market share towards Asia-Pacific, where Barcelona already represents close to 44% of the Spanish origin and destination passengers.

BCN GROWS ABOVE THE SPANISH AVERAGE IN ALL MARKETS
O&D Intercontinental traffic from Spain by geographic area 2016



Fuente: Elaboración GPA a partir de datos de ADI
 Source: GPA using data from ADI




6 New Intercontinental Destinations in 2016

Fuente: Comitè de Desenvolupament de Rutes aèries de Barcelona (CDRA)
 Source: Barcelona Air Route Development Committee (BARDC)




Global Communications Centre

P.O Box 506966
DIFC, Dubai, United Arab Emirates

 +971 4 325 2353
+971 4 386 5544

 +971 4 327 4948

 info@obor-invest.com

 <http://www.obor-invest.com>

